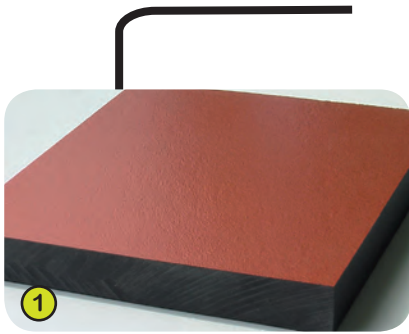




# Metropolis

## Technical Specification

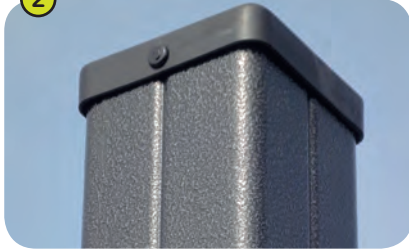
### J47101



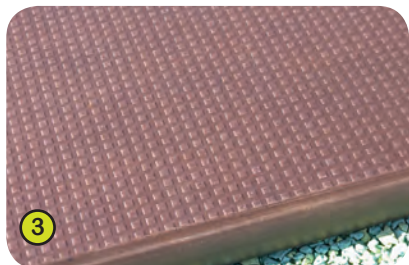
1- **The coloured panels** are made with a compact material 13mm thick. It is made up of 70% of softwood fibres and 30% of thermosetting resin, and it stands up to weathering very well (sun, rain, damp, etc.). The coloured surfaces are treated with products based on coloured acrylic polyurethane resins; this enables them to stand up well to UV radiation and resist damage.



2- **The 125mm diameter posts and the 95mm square posts** are made of lacquered galvanised steel. The two-tone grey graining finish has a slightly undulating surface for increased scratch resistance. The caps are made of injection moulded polyamide.



3- **The platform floors** are made from a 12.5mm thick, textured, non-slip compact material (HPL).



4- **The tubes** are made of stainless steel, diameter 40mm, guaranteeing lasting durability and reliability of the equipment.

**Injection moulded polyamide** fixings connect the posts to the platforms and the various play features.



5- **The tubular slide** is made of stainless steel.

6- **The "Kayak" slide** is made of rotary moulded polyethylene.



7- **The stainless steel fixings** are protected by polyamide anti-vandalism caps.